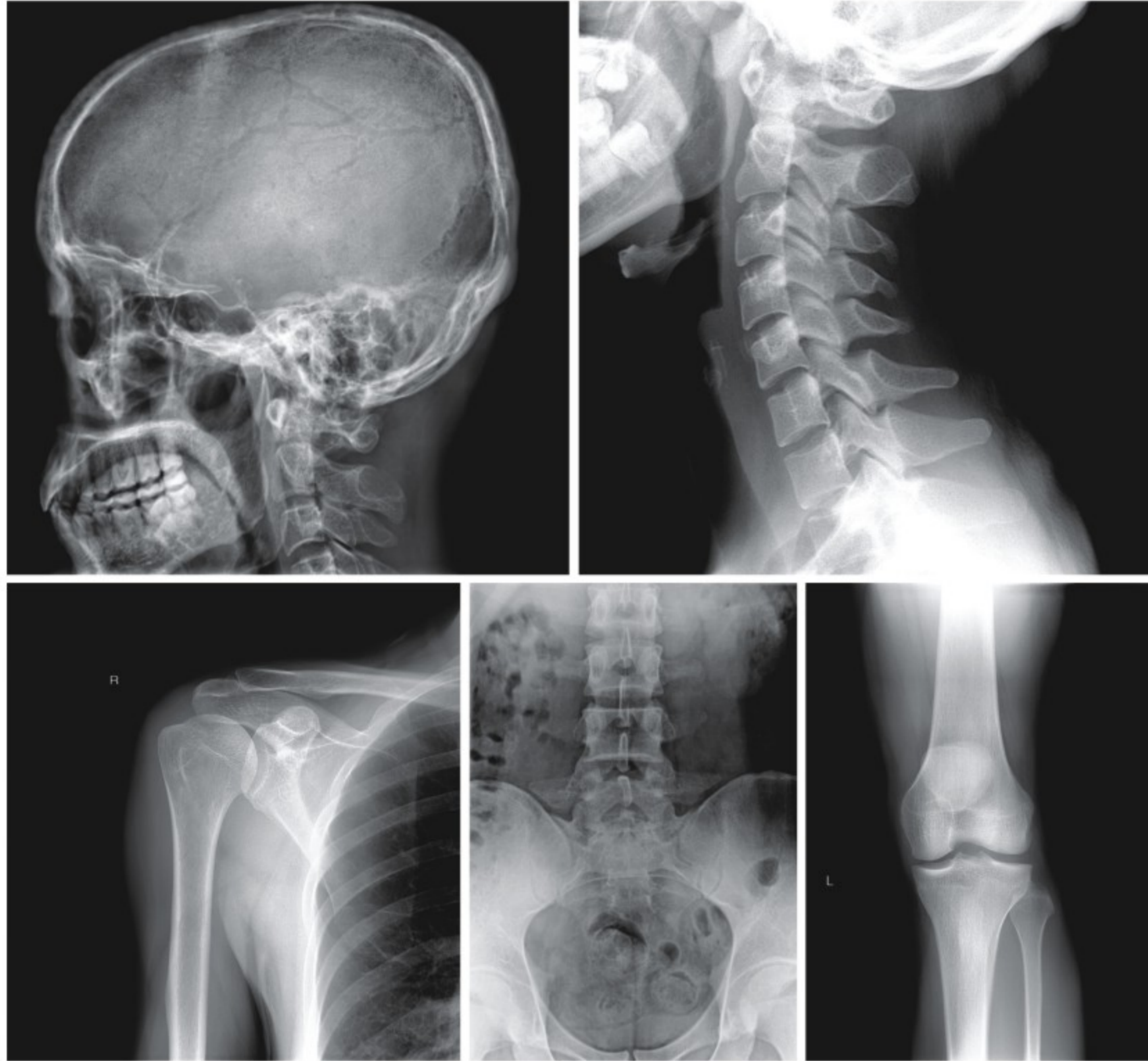


Acquisition Software

- Simple user interface.
- Multi region of interest image enhancement functions.
- Practical report template, with one or more images inserted as required.
- Mini PACS for patient history and diagnosis management.

Image Gallery



Shantou Institute of Ultrasonic Instruments Co., Ltd.

HEADQUARTERS:

Shantou Institute of Ultrasonic Instruments Co., Ltd.
Add: No.77, Jinsha Road, Shantou 515041 Guangdong, China
Tel: 86-754-8825 0150 Fax: 86-754-8825 1499
E-mail: siui@siui.com

HONG KONG OFFICE:

Shantou Institute of Ultrasonic Instruments (HK) Co., Ltd.
Add: Room 2101, Tung Chiu Commercial Center
193 Lockhart Road, Wanchai, Hong Kong
Tel: 852-2891 6722 Fax: 852-2891 6723

www.siui.com



SR-1000

Portable Integrated DR System



SR-1000

The portable DR system SR-1000, integrated with functions of acquisition, transmission and processing of X-ray images, diagnosis and patient information management, presents high-definition quality images quickly. It is easy to use and applicable to various mobile or stationary sites of medical facilities.

Main features

X-Ray Generator SR-8100

- Built-in battery power supply and wireless transmission release the X-ray from the laboratory.
- Easily integrate into emergency rooms, operation rooms and fields.
- Powerful and energy efficient LED collimator lights.
- Efficient self protection and self diagnosis on failure makes it convenient for maintenance.

Generator Mode	SR-8100
Power Supply	Built-in Battery or AC input
Max Power Output	2kW
Tube Voltage	40kV—100kV
Tube Current	25mA(40kV—60kV); 20mA(61kV—100kV)
Current time product	0.4-50mAs 22 steps
Working Frequency	≥50kHz
Focus spot	1.2mm
Total Filtration	3mmAl Collimator included
Collimator	Continuous with Centre + Indicator
Dimensions (L * W * H)	522mmX227mmX217mm
Weight (kg)	12

X-Ray Generator SR-8100



X-Ray Flat Panel

- Excellent image quality with high imaging resolution
- Fast acquisition time within 5s
- Large imaging area for most general radiographic exams
- Suitable for both stationary and mobile solution

	SIUI SFD_1X
Receptor Type	Amorphous Silicon
Conversion Screen	GOS
Panel Size	14"×17"
Pixel Pitch	139 μm
Pixel Matrix	2560×3072
Limiting Resolution	3.6 lp/mm
A/D Conversion	14 bits
Acquisition Time	5s

